



Sailing Instructions for 2020 Round-the-Bay Series

June 13, June 27, October 3 & November 14

1 RULES These races shall be governed by the *Racing Rules of Sailing*. These SI change RRS 26, 32, and 33.

2 Eligibility and Entry 2.1 Eligible are boats owned by CYC members and rated by Gulf Yachting Association Performance Handicap Racing Fleet (PHRF). CYC Race Committee (RC) requests a copy of entry's PHRF certificate.

2.2 Entry will be achieved race day by registering on CYC Score Sheet the skipper's name, the boat design (e.g. Hunter 34 SD RF), the boat's sail number (if applicable), and the boat's PHRF rating (e.g. 171).

3 SCHEDULE 3.1 One race is planned on each of the following Saturdays: June 13, June 27, Oct. 3 and Nov. 14

3.2 Registration will begin 9:45 AM each race day at the CYC clubhouse.

3.3 Skippers' Meeting will begin 10:00 AM at clubhouse where RC will post course and structure(s) to be rounded.

3.4 Race will start at 11:00 noon Global Positioning System time. No other signal will be given. This changes RRS 26.

4 COURSE 4.1 The course will start and end near Cypremort Point Y.C. and will include rounding one or more channel marks.

4.2 Structures to be rounded are mostly government channel marks (CM) and are listed in the tables below. The table includes the structures' coordinates and relative bearings in degrees with distances in nautical miles.

4.3 Structures' locations in Vermilion Bay are labeled in the diagram appearing on page 3.

4.4 The race's starting line and finishing line will be between the Tower located offshore and noted in the table below, and the Lighthouse on the CYC property.

4.5 The course will not be shortened. This changes RRS 32.

4.6 Legs of the course will not be changed after posting. This changes RRS 33.

4.7 Competitors should monitor VHF channel 16 for signals, e.g. abandon race.

Table 1 – Location data for Round-the-Bay “Long Course”

Channel markers described below are new to CYC SIs and are included in the chart excerpt that follows on page 3. See 4.3 above. Bearings (b) are in degrees and distance (d) in Nautical miles.								
Latitude North	Longitude West	From\To	CYC	Tower	CM#34	CM#22	CM#1 (Boston)	Pipes
29.7122°	91.8795°	CYC		216°/0.28				336°/4.07
29.7085°	91.8825°	Tower	036°/0.28	b/d	280°/10.7	235°/9.2	300°/8.3	339°/4.21
29.7178°	92.1015°	CM#34		100°/10.7	b/d	154°/8.5	040°/4.9	
29.6355°	92.0188°	CM#22		055°/9.2	334°/8.5	b/d	004°/9.9	
29.7730°	92.0323°	CM#1 (Boston)		120°/8.3	220°/4.9	184°/9.9	b/d	
29.7742°	91.9115°	Pipes	156°/4.07	159°/4.21				b/d

CM “34” is first mark just outside of four mile cut in Vermilion Bay. (Lat: 029°43'068 N and 092°06'092 W).
 CM “22” is last mark prior to entering Southwest Pass. (Lat: 029° 38' 129 N and 092° 01' 125 W).
 CM “1” is the only mark prior to entering Boston Canal.



Sailing Instructions for 2020 Round-the-Bay Series

June 13, June 27, October 3 & November 14

5 SCORING

5.1 At finish each boat will note the time of day of her finish and later properly record it on the CYC Score Sheet located in the clubhouse. The Race Committee will use the “time of finish” to calculate elapsed time and score the entry.

5.2 Low Point System of RRS Appendix A will be used.

6 NOTICES TO COMPETITORS

Notices including the day’s course will be posted on official notice board located at CYC clubhouse.

7 DISCLAIMER OF LIABILITY

7.1 A boat that retires from a race shall notify the race committee as soon as possible.

7.2 Competitors participate in the races entirely at their own risk. See RRS 4, Decision to Race.

7.3 Neither the organizing authority nor any member will accept liability for material damage or personal injury or death sustained in conjunction with or prior to, during, or after the races in this series.

8 INSURANCE

Each participating boat shall be insured with adequate and valid third-party liability insurance.

-----End of Sailing Instructions-----

Table containing the location of additional Vermillion Bay marks and structures that may be used by the Race Committee to define a shorter course.

Table 2 – Location data for Round-the-Bay “Short Course”

Latitude North	Longitude West	From\To	CYC	Tower	CM #8	CM #9	CM #12	CM #14	CM #16	Pipes
29°42.734	91°52.769	CYC		216°/0.28	253°/3.37	268°/2.73	288°/2.30	334°/2.65	358°/4.07	336°/4.07
29°42.507	91°52.953	Tower	036°/0.28		256°/3.15	273°/2.58	294°/2.24	339°/2.79	001°/4.29	339°/4.21
29°41.748	91°56.468	CM #8	073°/3.37	076°/3.15		029°/1.01	032°/1.96	032°/3.94	032°/5.92	019°/4.94
29°42.631	91°55.907	CM #9	088°/2.73	093°/2.58	209°/1.01		034°/0.95	032°/2.93	032°/4.91	016°/3.96
29°43.425	91°55.295	CM #12	108°/2.30	114°/2.24	212°/1.96	214°/0.95		032°/1.98	032°/3.96	010°/3.07
29°45.120	91°54.111	CM #14	154°/2.65	159°/2.79	212°/3.94	212°/2.93	212°/1.98		032°/1.98	340°/1.42
29°46.811	91°52.927	CM #16	178°/4.07	181°/4.29	212°/5.92	212°/4.91	212°/3.96	212°/1.98		257°/1.57
29°46.452	91°54.688	Pipes	156°/4.07	159°/4.21	199°/4.94	196°/3.96	190°/3.07	160°/1.42	077°/1.57	

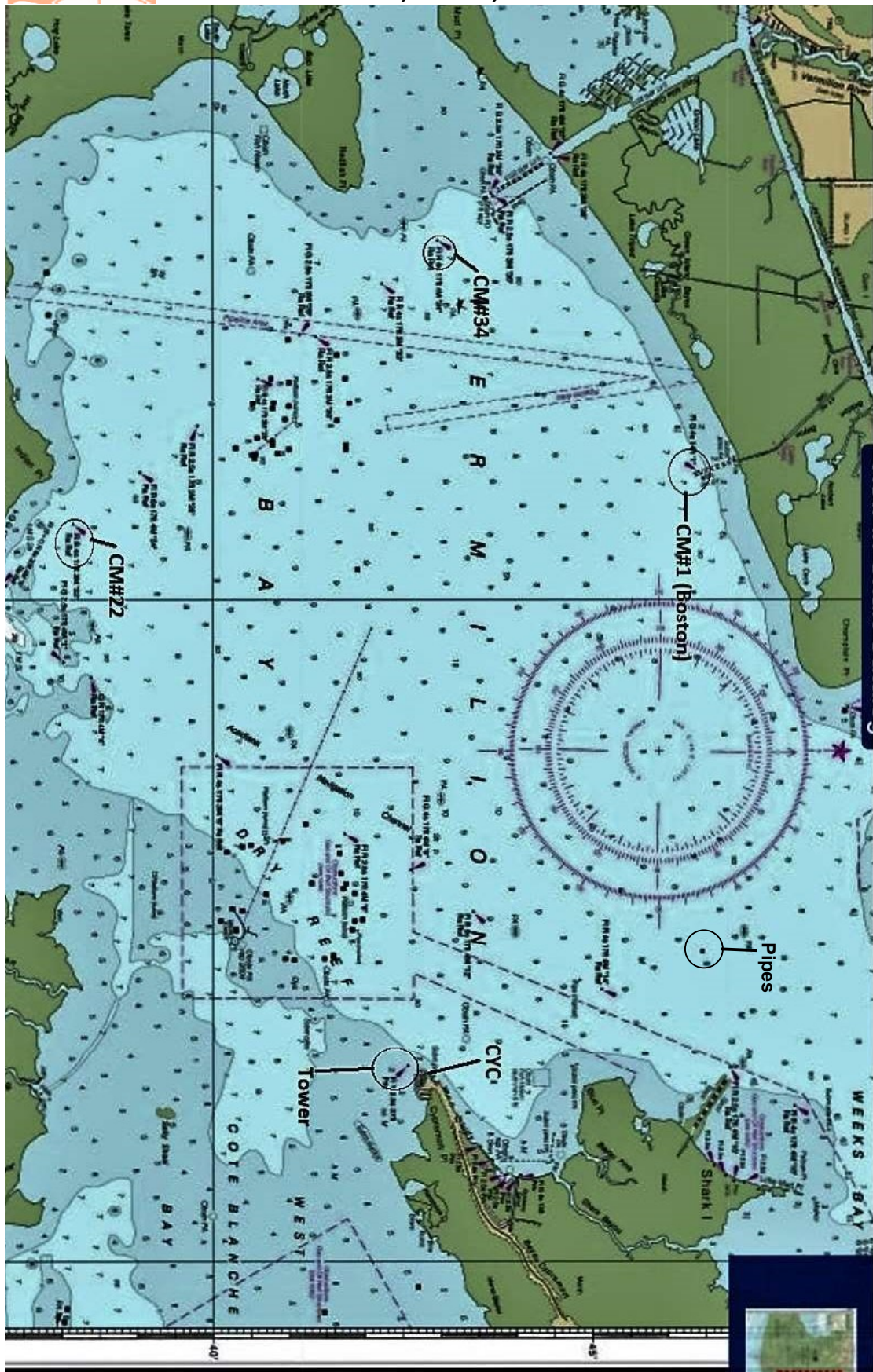
CYC Race Committee Contact:

Brent Boulet (337) 332-6137 home, (337) 278-7508 mobile, bouletbrent@yahoo.com



Sailing Instructions for 2020 Round-the-Bay Series

June 13, June 27, October 3 & November 14



Source: <http://www.charts.noaa.gov/OnlineViewer/11349.shtml>

Vermilion Bay and Approaches—“Long Course” Markers